

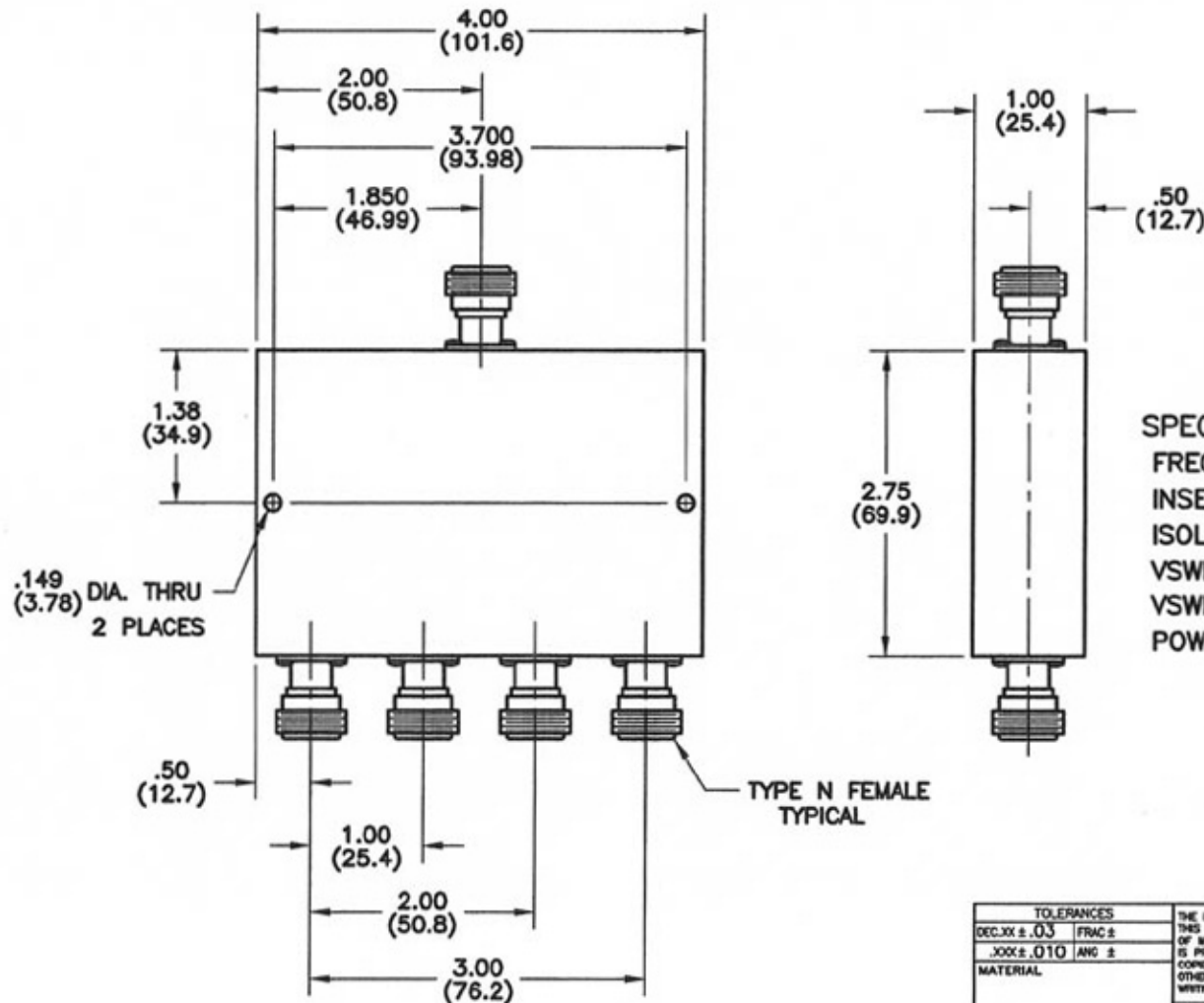
4

3

2

1

REVISIONS				
REV	ZONE	DESCRIPTION	DATE	BY ECO
A	---	REVISE PHYSICAL OUTLINE & SPECS	2-18-07	GVC ---



**SPECIFICATIONS:**

FREQUENCY RANGE: 0.5 - 2.0 GHz

INSERTION LOSS: 0.9 dB MAX.

ISOLATION: 20 dB MIN.

VSWR (COMMON PORT): 1.50:1 MAX.

VSWR (OUTPUT PORTS): 1.40:1 MAX.

POWER RATING: 30 WATTS AVG., WITH LOAD  
VSWR OF 1.20:1 MIN.

DIMENSIONS: INCHES  
(MILLIMETERS)

CONTACT: MICROWAVE DEVICES - 1150 N. GRAHAM RD.  
(317) 736-6833 FRANKLIN, IN 46131

TOLERANCES	
DEC.XX ± .03	FRAC ±
.XXX ± .010	ANG ±
MATERIAL	
FINISH	
SIGNATURES	
DR	G.V.Cothren
DATE	12-27-06
CHK	
APPO	
APPD	

THE INFORMATION CONTAINED IN THIS DOCUMENT IS THE PROPERTY OF MICROWAVE DEVICES, INC. AND IS PROPRIETARY. IT IS NOT TO BE COPIED OR USED FOR ANY PURPOSE OTHER THAN AS INSTRUCTED, IN WRITING, BY MICROWAVE DEVICES, INC.

**MICROWAVE DEVICES**  
RF and Microwave Components

**OUTLINE, 4PD1.25N  
4 WAY POWER DIVIDER**

CAGE SIZE DRAWING NO.  
60674 B 900634

DRAWING SCALE 1=1 SHEET 1 OF 1

4

3

2

1