

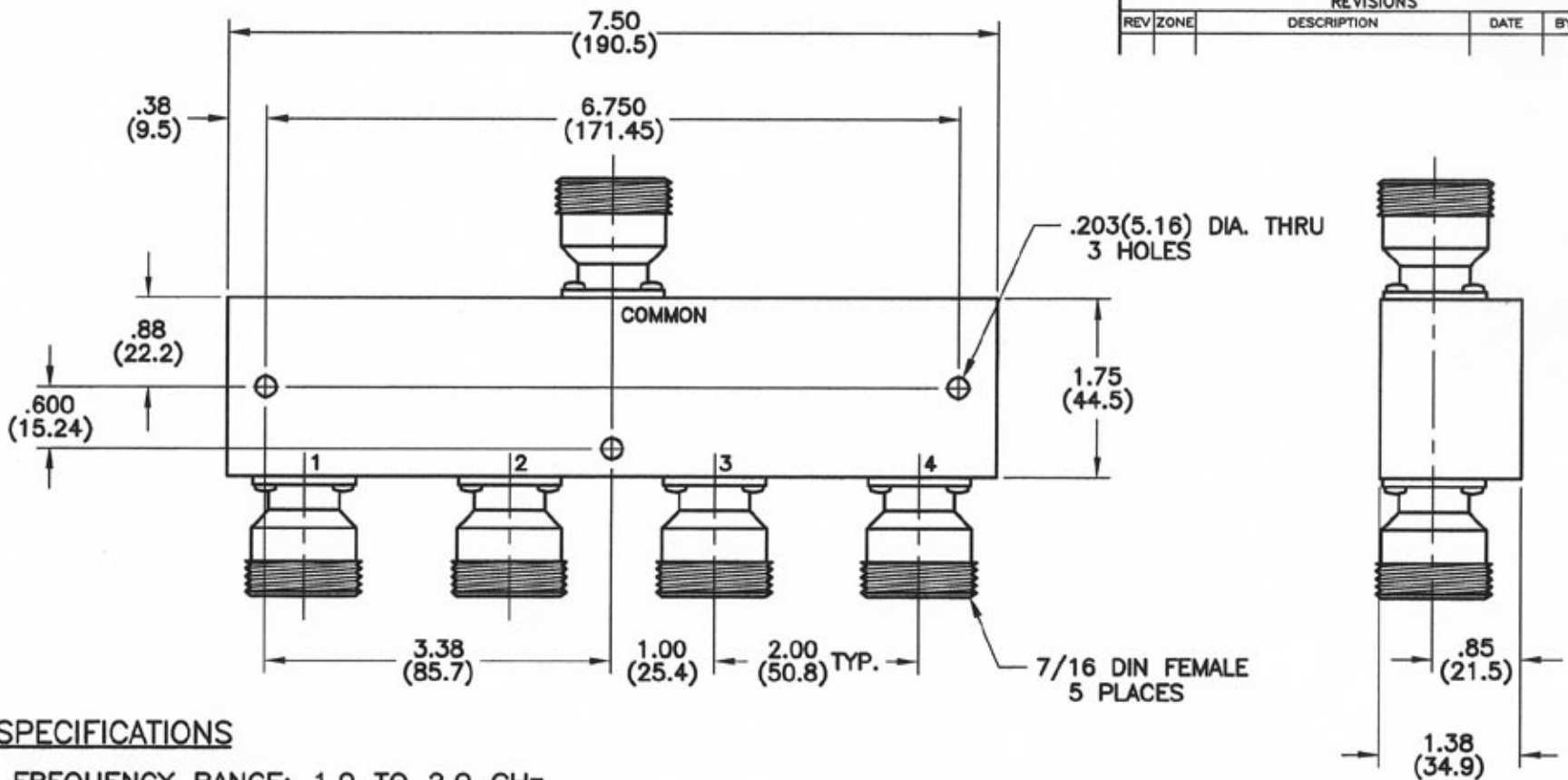
4

3

2

1

REVISIONS					
REV	ZONE	DESCRIPTION	DATE	BY	ECO



SPECIFICATIONS

- FREQUENCY RANGE: 1.0 TO 2.0 GHz
- INSERTION LOSS: 0.6 dB MAX.
- ISOLATION: 20 dB MIN.
- VSWR: COMMON PORT - 1.50:1 TYP.
OUTPUT PORTS - 1.40:1 TYP.
- POWER: 30 WATTS AVG. W/ LOAD VSWR 1.20:1 MAX.

DIMENSIONS: INCHES (MILLIMETERS)

TOLERANCES	
DECIMAL ± .03	FRACTION ±
.0001 ± .010	ANG ±
MATERIAL	
FINISH	
SIGNATURES	
DR G.V.Cothren	DATE 2-8-07
CHK	
APPS	
APPS	

Microwave Devices
RF and Microwave Components

**OUTLINE, POWER DIVIDER
MODEL 4PD1.5-D7**

CAGE 60674 SIZE B DRAWING NO. 900636-4

DRAWING SCALE 1=1 SHEET 1 OF 1

CONTACT: MICROWAVE DEVICES - 1150 N. GRAHAM RD. FRANKLIN, IN 46131 (317) 736-8833

DIMENSIONS ARE IN INCHES UNLESS OTHERWISE SPECIFIED.

4

3

2

1