

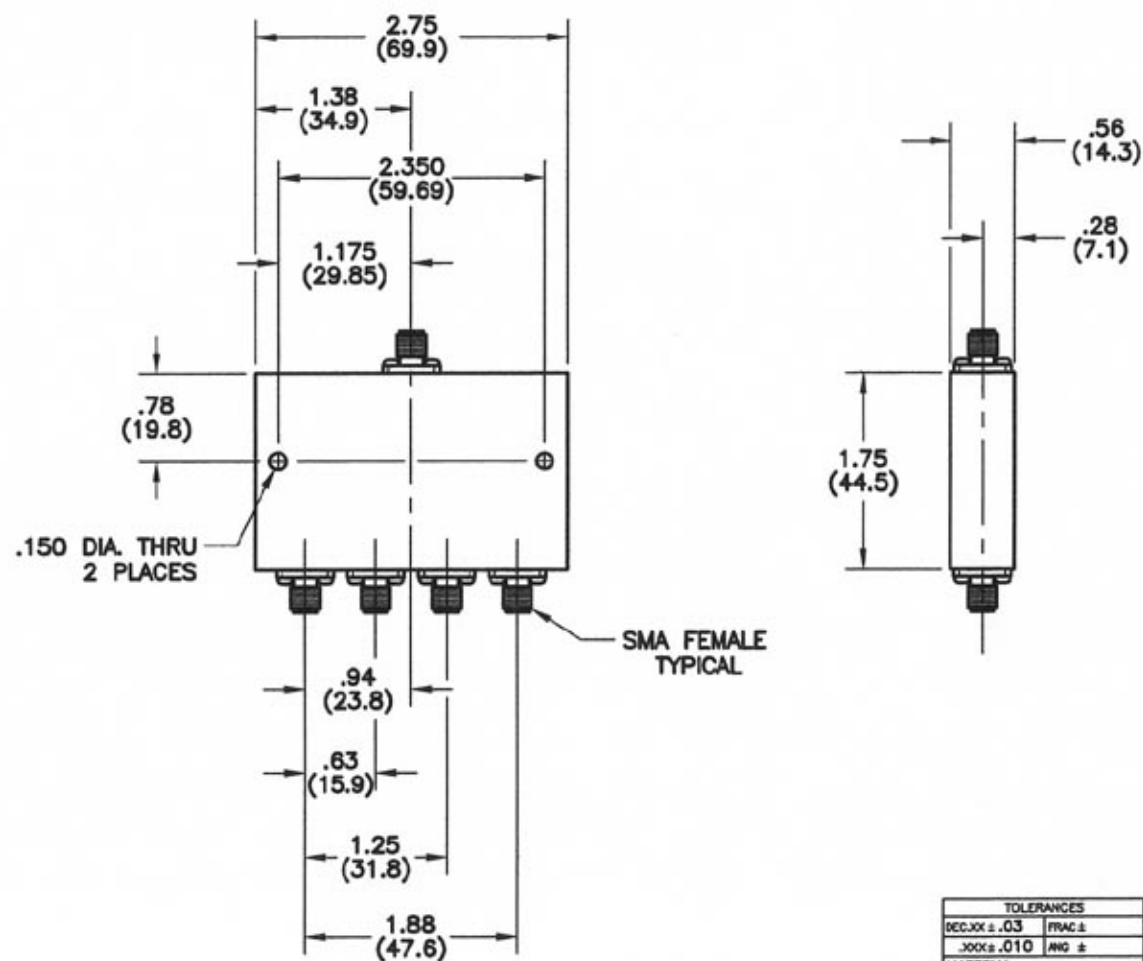
4

3

2

1

REVISIONS					
REV	ZONE	DESCRIPTION	DATE	BY	ECO
A	2C	CORRECTED FREQ. RANGE SPEC	2-8-07	GVC	---



### SPECIFICATIONS

FREQUENCY RANGE: 1.0 TO 2.0 GHz  
 INSERTION LOSS: 0.6 dB MAX.  
 ISOLATION: 20 dB MIN.  
 VSWR: INPUT - 1.40:1 MAX.  
 OUTPUT - 1.40:1 MAX.  
 POWER: 30 WATTS AVG. W/ LOAD VSWR 1.20:1 MAX.

DIMENSIONS: INCHES (MILLIMETERS)

TOLERANCES	
DECIMAL ± .03	FRACTION ±
HOLES .010	ANG ±
MATERIAL	
FINISH	
DR	G.V. Cothron
CHK	
APPE	
APPD	

SIGNATURES		DATE
DR		1-8-07
CHK		
APPE		
APPD		

THE INFORMATION CONTAINED IN THIS DOCUMENT IS THE PROPERTY OF MICROWAVE DEVICES, INC. AND IS PROPRIETARY. IT IS NOT TO BE COPIED OR USED FOR ANY PURPOSE OTHER THAN AS INSTRUCTED, IN WRITING, BY MICROWAVE DEVICES, INC.

**Microwave Devices**  
RF and Microwave Components

**OUTLINE, 4-WAY POWER DIVIDER, MODEL 4PD1.5S**

CAGE 60674 B SIZE B DRAWING NO. 900636-1

DRAWING SCALE 1=1 SHEET 1 OF 1

CONTACT: MICROWAVE DEVICES - 1150 N. GRAHAM RD. FRANKLIN, IN 46131 (317) 736-8833

DIMENSIONS ARE IN INCHES UNLESS OTHERWISE SPECIFIED.

4

3

2

1