

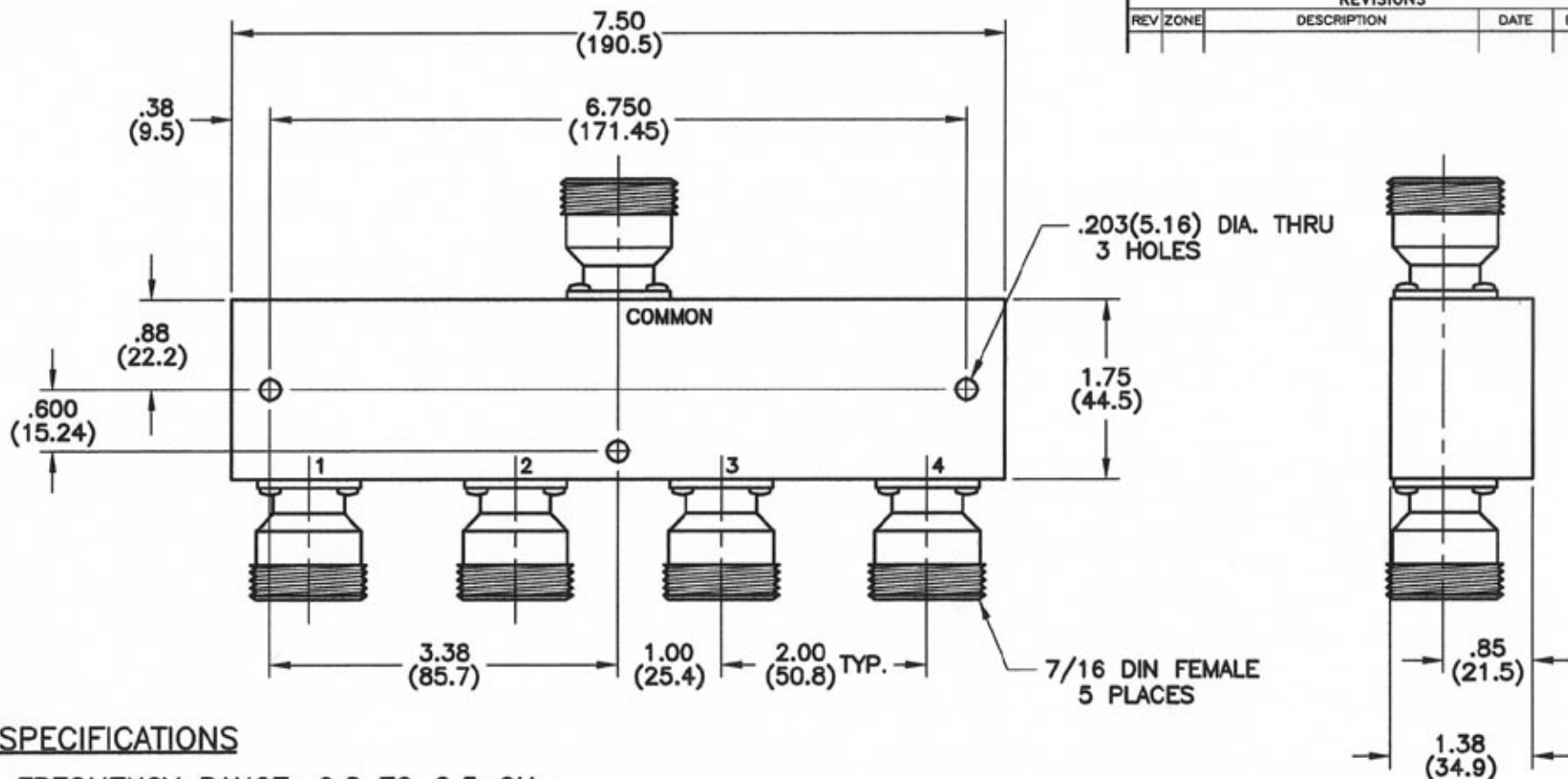
4

3

2

1

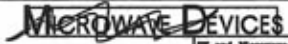
REVISIONS					
REV	ZONE	DESCRIPTION	DATE	BY	ECO



SPECIFICATIONS

FREQUENCY RANGE: 0.8 TO 2.5 GHz
 INSERTION LOSS: 0.3 dB TYP., 0.5 dB MAX.
 ISOLATION: 20 dB MIN., 23 dB TYP.
 VSWR: COMMON PORT - 1.50:1 TYP.
 OUTPUT PORTS - 1.40:1 TYP.
 POWER: 30 WATTS AVG. W/ LOAD VSWR 1.20:1 MAX.

DIMENSIONS: INCHES
(MILLIMETERS)

TOLERANCES		THE INFORMATION CONTAINED IN THIS DOCUMENT IS THE PROPERTY OF MICROWAVE DEVICES, INC. AND IS PROPRIETARY. IT IS NOT TO BE COPIED OR USED FOR ANY PURPOSE OTHER THAN AS INSTRUCTED, IN WRITING, BY MICROWAVE DEVICES, INC.	 <small>(RF and Microwave Components)</small>		
DEC.XX ± .03	FRAC ±				
.XXX ± .010	ANG ±		OUTLINE, POWER DIVIDER MODEL 4PD1.65-D7		
MATERIAL					
FINISH		SIGNATURES	DATE	CAGE SIZE DRAWING NO. 60674 B 900360-4	
DR		G.V.Cothren	2-8-07		
CHK					
APPD					
APPD				DRAWING SCALE 1=1	SHEET 1 OF 1

CONTACT: MICROWAVE DEVICES - 1150 N. GRAHAM RD.
 FRANKLIN, IN 46131 (317) 736-8833

DIMENSIONS ARE IN INCHES UNLESS OTHERWISE SPECIFIED.

4

3

2

1