

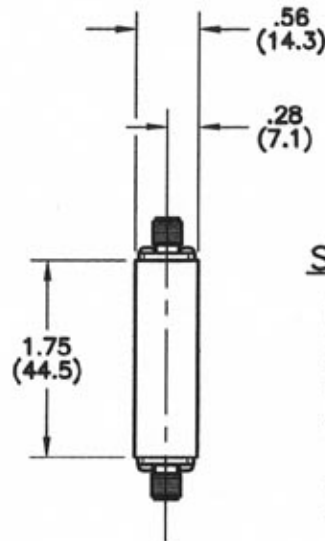
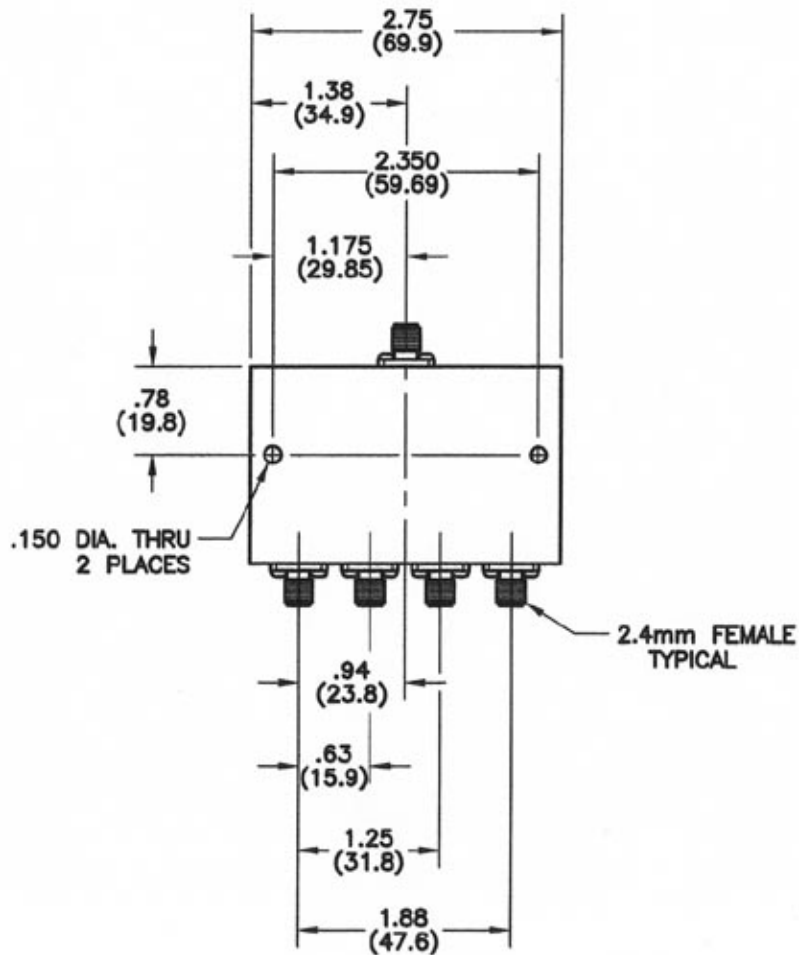
4

3

2

1

REVISIONS					
REV	ZONE	DESCRIPTION	DATE	BY	ECO



SPECIFICATIONS

FREQUENCY RANGE: 1.5 TO 3.0 GHz

INSERTION LOSS: 0.6 dB MAX.

ISOLATION: 20 dB MIN.

VSWR: INPUT - 1.40:1 MAX.

OUTPUT - 1.40:1 MAX.

POWER: 30 WATTS AVG. W/ LOAD VSWR
1.20:1 MAX.

DIMENSIONS: INCHES
(MILLIMETERS)

TOLERANCES

DECIMAL ± .03	FRACTION ±
HOLES ± .010	ANG ±

MATERIAL

FINISH

THE INFORMATION CONTAINED IN THIS DOCUMENT IS THE PROPERTY OF MICROWAVE DEVICES, INC. AND IS PROPRIETARY. IT IS NOT TO BE COPIED OR USED FOR ANY PURPOSE OTHER THAN AS INSTRUCTED, IN WRITING, BY MICROWAVE DEVICES, INC.

SIGNATURES DATE

DR G.V. Cothron 2-9-07

CHK

APPD

APPD

Microwave Devices
RF and Microwave Components

OUTLINE, 4-WAY POWER
DIVIDER, MODEL 4PD2.25-24

CAGE SIZE DRAWING NO.
60674 B 900647-3

DRAWING SCALE 1=1 SHEET 1 OF 1

CONTACT: MICROWAVE DEVICES - 1150 N. GRAHAM RD. FRANKLIN, IN 46131 (317) 736-8833

DIMENSIONS ARE IN INCHES UNLESS OTHERWISE SPECIFIED.

4

3

2

1