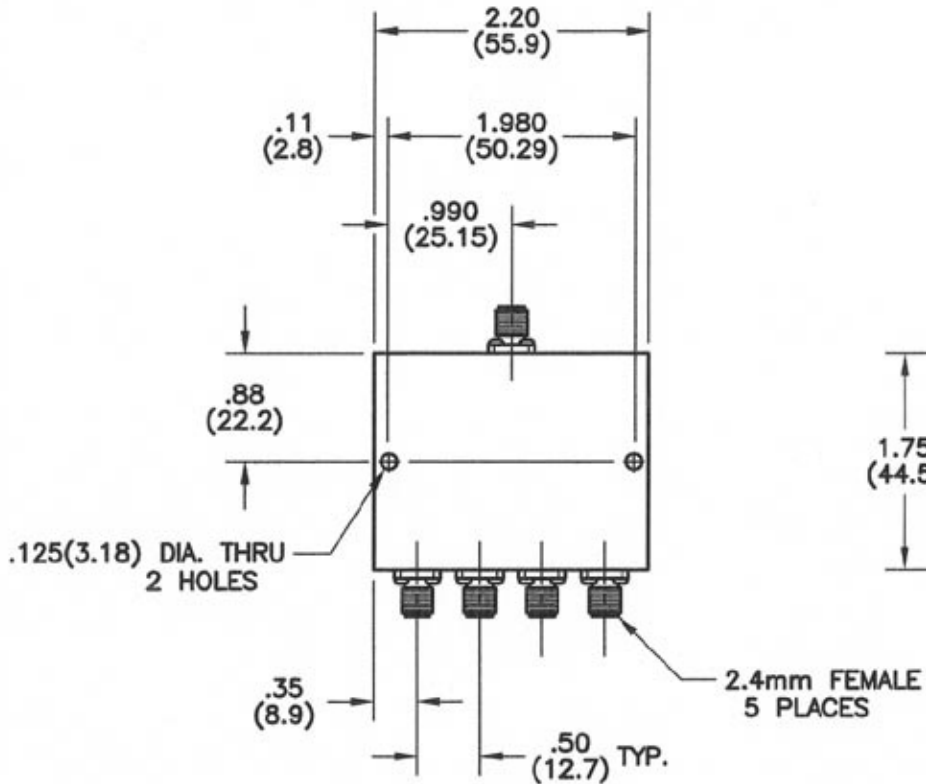


REVISIONS					
REV	ZONE	DESCRIPTION	DATE	BY	ECO



SPECIFICATIONS:

- FREQUENCY RANGE: 18.0 - 26.5 GHz
- INSERTION LOSS: 1.8 dB MAX.
- ISOLATION: 16 dB MIN.
- VSWR (COMMON PORT): 1.70:1 MAX.
- VSWR (OUTPUT PORTS): 1.70:1 MAX.
- POWER RATING: 10 WATTS AVG., WITH LOAD VSWR OF 1.20:1 MIN.

DIMENSIONS: INCHES (MILLIMETERS)

TOLERANCES	
DEC.XX ± .03	FRAC ±
.XXX ± .010	ANG ±
MATERIAL	
FINISH	
SIGNATURES	
DR	G.V.Cothren
CHK	
APPD	
APPD	

Microwave Devices <small>RF and Microwave Components</small>	
OUTLINE, 4PD22.25-24 4 WAY POWER DIVIDER	
CAGE	SIZE
60674	B
DRAWING NO.	900650-3
DRAWING SCALE	1=1
SHEET	1 OF 1

CONTACT: MICROWAVE DEVICES - 1150 N. GRAHAM RD. FRANKLIN, IN 46131 (317) 736-8833

DIMENSIONS ARE IN INCHES UNLESS OTHERWISE SPECIFIED.