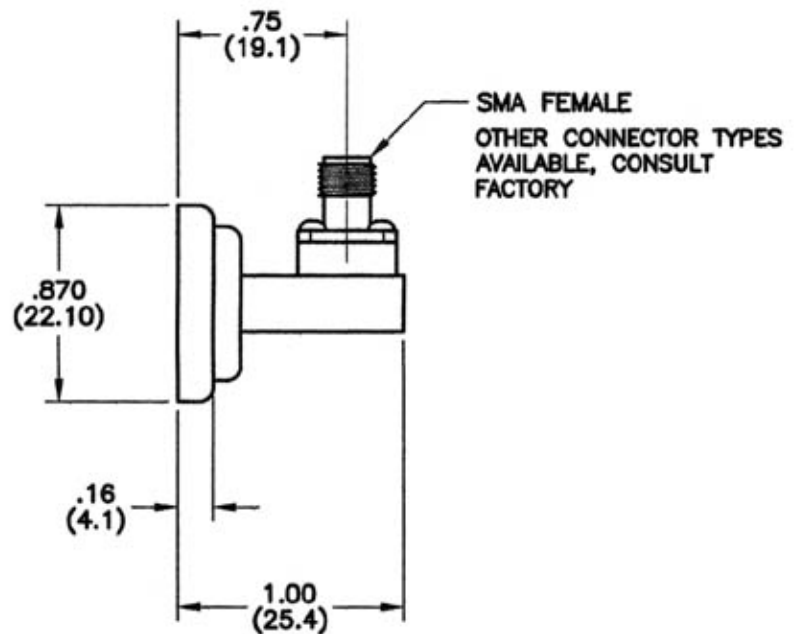
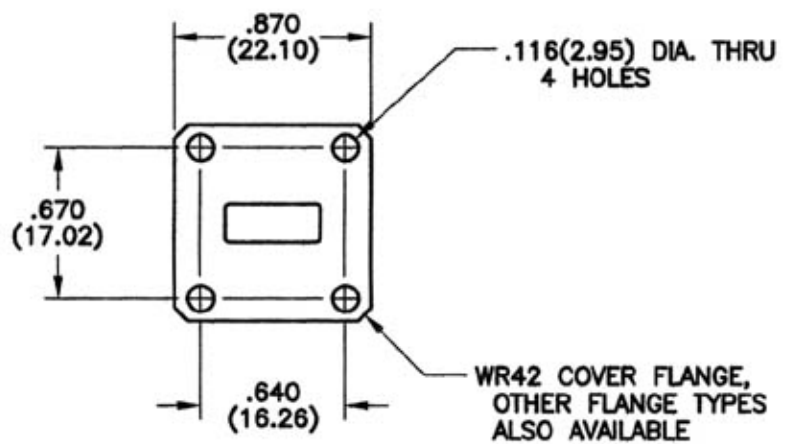


REVISIONS				
REV	ZONE	DESCRIPTION	DATE	BY ECO
A	4A	ADDED SPECIFICATIONS	8-10-08	GVC ---



SPECIFICATIONS

- FREQUENCY RANGE: 18.0 TO 26.5 GHz
- INSERTION LOSS: 0.32 dB MAX.
- VSWR: 1.15:1 NOM., 1.25:1 MAX. (ENTIRE BAND)
- POWER RATING: 50 W. AVG., 3.0 kW PEAK
- CONNECTOR: SMA FEMALE
- MATERIAL: ALUMINUM, STD. - BRASS OR COPPER AVAILABLE
- FINISH: YELLOW CHROMATE (IRIDITE) PAINTED FINISHES AVAILABLE

DIMENSIONS: INCHES (MILLIMETERS)

TOLERANCES DECIMAL ± .03 FRACTION ± .XXX ± .010 ANG ± MATERIAL FINISH		THE INFORMATION CONTAINED IN THIS DOCUMENT IS THE PROPERTY OF MICROWAVE DEVICES, INC. AND IS PROPRIETARY. IT IS NOT TO BE COPIED OR USED FOR ANY PURPOSE OTHER THAN AS INSTRUCTED, IN WRITING, BY MICROWAVE DEVICES, INC.	MICROWAVE DEVICES <small>RF and Microwave Components</small>	
DR G.V. Colthron DATE 9-5-07 CHK APPD			ADAPTER, WAVEGUIDE TO COAX, WA42-SF-C	
CONTACT: MICROWAVE DEVICES - 1150 N. GRAHAM RD. FRANKLIN, IN 46131 (317) 738-8833		DIMENSIONS ARE IN INCHES UNLESS OTHERWISE SPECIFIED.	CAGE 60674 SIZE B DRAWING NO. 900706	DRAWING SCALE 2=1 SHEET 1 OF 1