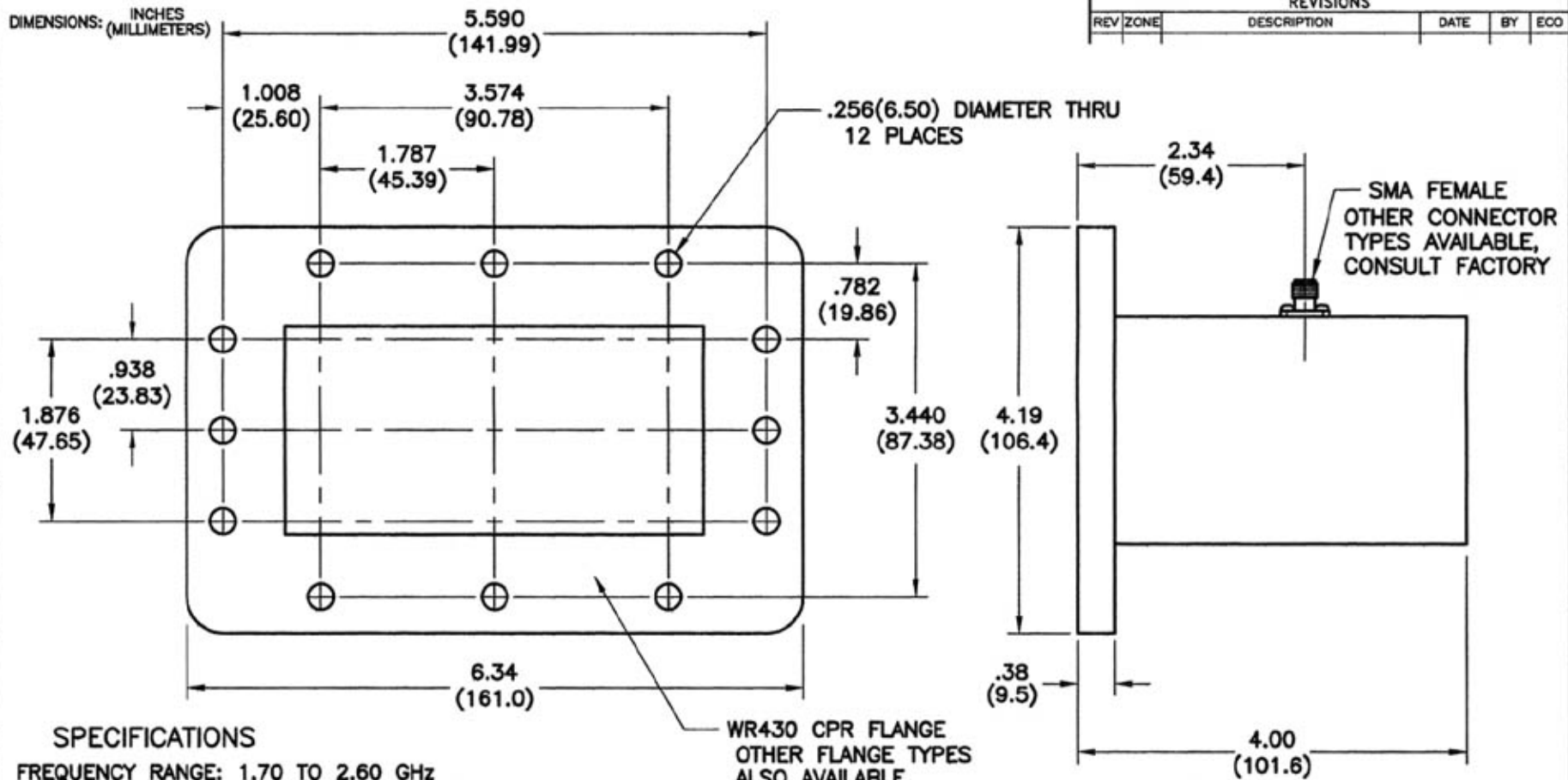


DIMENSIONS: INCHES (MILLIMETERS)



SPECIFICATIONS

FREQUENCY RANGE: 1.70 TO 2.60 GHz
 INSERTION LOSS: 0.13 dB MAX.
 VSWR: 1.15:1 NOM., 1.25:1 MAX. (ENTIRE BAND)
 POWER RATING: 50 W. AVG., 3.0 KW PEAK
 CONNECTOR: SMA FEMALE
 MATERIAL: ALUMINUM, STD. - BRASS OR COPPER AVAILABLE
 FINISH: YELLOW CHROMATE (IRIDITE) PAINTED FINISHES AVAILABLE

WR430 CPR FLANGE
 OTHER FLANGE TYPES
 ALSO AVAILABLE

TOLERANCES	
DEC.XX ±.03	FRAC ±
.XXX ±.010	ANG ±
MATERIAL	

THE INFORMATION CONTAINED IN THIS DOCUMENT IS THE PROPERTY OF MICROWAVE DEVICES, INC. AND IS PROPRIETARY. IT IS NOT TO BE COPIED OR USED FOR ANY PURPOSE OTHER THAN AS INSTRUCTED, IN WRITING, BY MICROWAVE DEVICES, INC.

Microwave DEVICES
(RF and Microwave Components)

SIGNATURES		DATE
DR	G.V.Cothren	8-13-09
CHK		
APPD		
APPD		

ADAPTER, WAVEGUIDE TO COAX, WA430-SF-CPR

CAGE	SIZE	DRAWING NO.
60674	B	900812
DRAWING SCALE		SHEET 1 OF 1
1=1		

CONTACT: MICROWAVE DEVICES - 1150 N. GRAHAM RD. FRANKLIN, IN 46131 (317) 736-8833

DIMENSIONS ARE IN INCHES UNLESS OTHERWISE SPECIFIED.