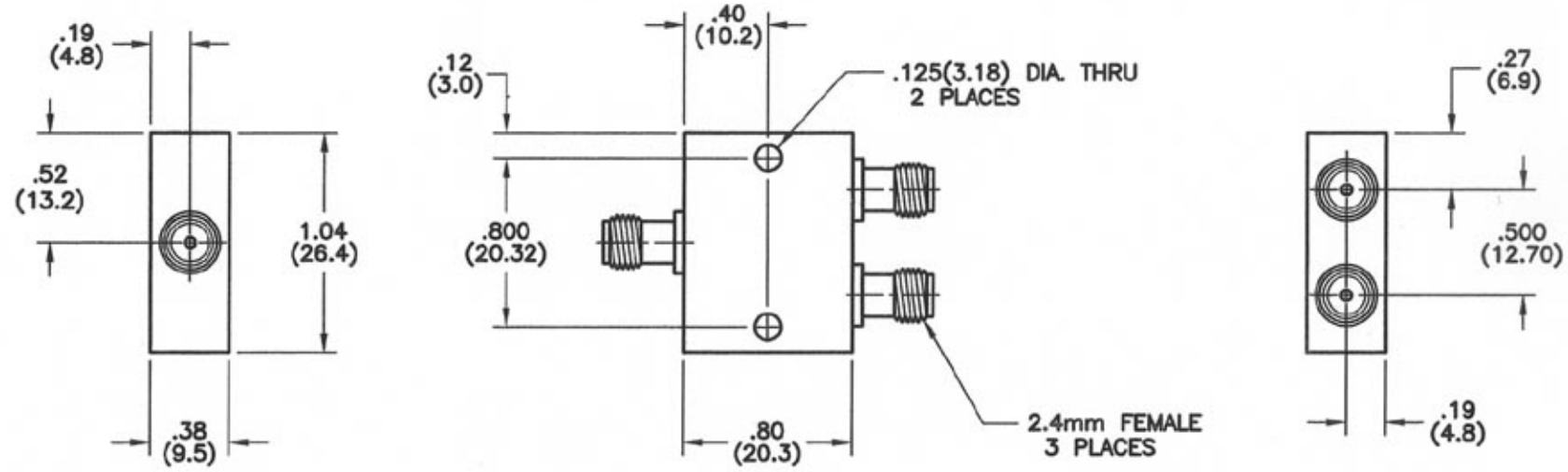


REVISIONS				
REV	ZONE	DESCRIPTION	DATE	BY



**SPECIFICATIONS**

- FREQUENCY RANGE: 5.0 TO 40.0 GHz
- INSERTION LOSS: 2.0 dB MAX.
- ISOLATION: 13 dB MIN.
- VSWR: 1.90:1 MAX.
- PHASE BALANCE:  $\pm 10^\circ$  MAX.
- AMPLITUDE BALANCE:  $\pm 1.0$  dB MAX.
- INPUT POWER: 10 WATTS MAX.

DIMENSIONS: INCHES (MILLIMETERS)

TOLERANCES	
DEC.XI $\pm .03$	FRAC $\pm$
XXX $\pm .010$	ANG $\pm$
MATERIAL	
FINISH	
SIGNATURES	
DR	G.V.Cothren
CHK	
APPD	
APPD	

**Microwave Devices**  
RF and Microwave Components

**OUTLINE, POWER DIVIDER,  
 MODEL 2PD22.5-24**

CAGE 60674 B SIZE B DRAWING NO. 900588-1

DRAWING SCALE 2=1 SHEET 1 OF 1

CONTACT: MICROWAVE DEVICES - 1150 N. GRAHAM RD. FRANKLIN, IN 46131 (317) 736-8833

DIMENSIONS ARE IN INCHES UNLESS OTHERWISE SPECIFIED.