

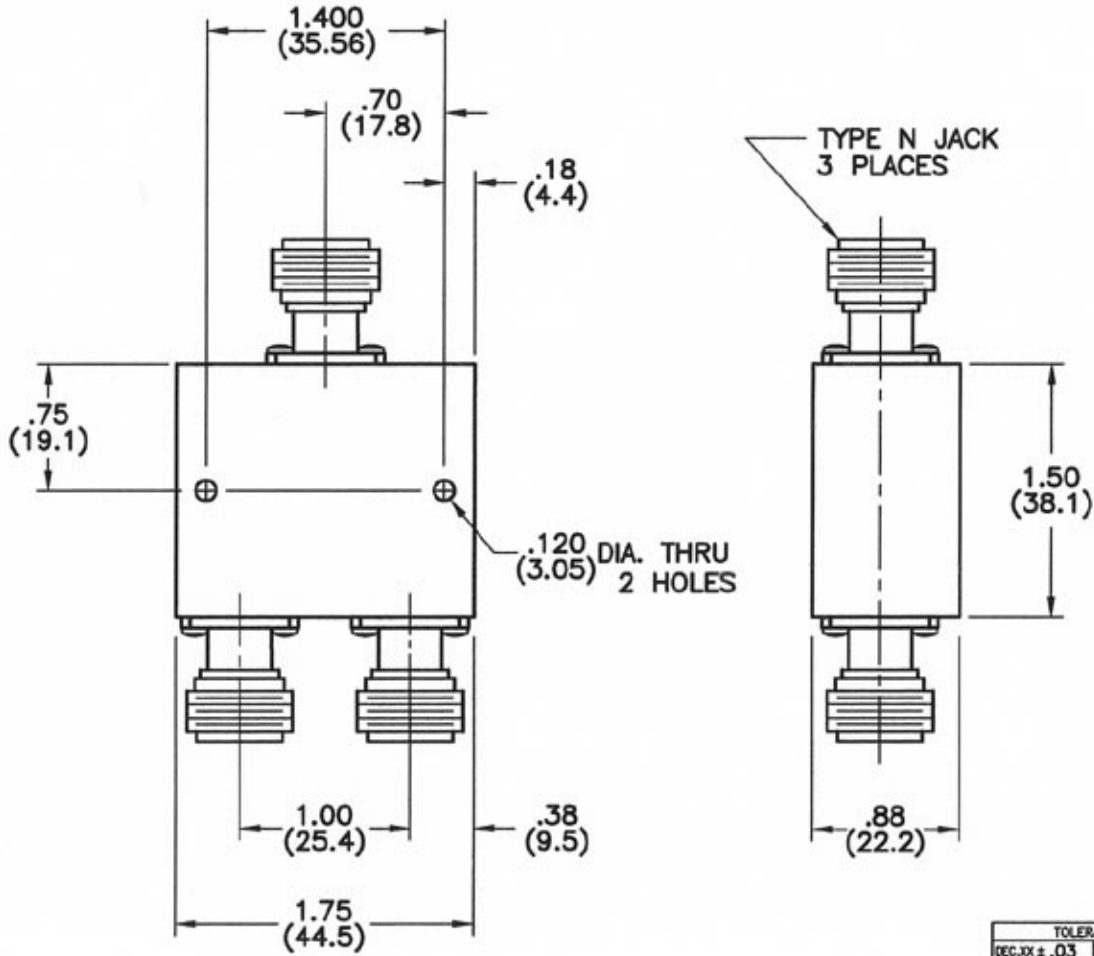
4

3

2

1

REVISIONS					
REV	ZONE	DESCRIPTION	DATE	BY	ECO
A	2C	ADDED POWER SPECIFICATION	2-1-07	GVC	---



**SPECIFICATIONS:**

- FREQUENCY: 2.0 - 4.0 GHz
- ISOLATION: 20 dB MIN.
- VSWR: 1.30:1 MAX.
- INSERTION LOSS: 0.3 dB MAX.
- POWER: 30 WATTS AVG., WITH LOAD
- VSWR OF 1.20:1 OR BETTER

DIMENSIONS: INCHES (MILLIMETERS)

TOLERANCES		THE INFORMATION CONTAINED IN THIS DOCUMENT IS THE PROPERTY OF MICROWAVE DEVICES, INC. AND IS PROPRIETARY. IT IS NOT TO BE COPIED OR USED FOR ANY PURPOSE OTHER THAN AS INSTRUCTED, IN WRITING, BY MICROWAVE DEVICES, INC.	SIGNATURES		DATE
DEC.XX ± .03	FRAC ±		DR	G.V.Cothren	12-8-08
.XXX ± .010	ANG ±		CHK		
MATERIAL		APPD			
FINISH		APPD			

**MICROWAVE DEVICES**  
RF and Microwave Components

**OUTLINE, MODEL 2PD3.0-N  
2-WAY DIVIDER, TYPE N**

CAGE 60674 SIZE B DRAWING NO. 900493-2

DRAWING SCALE 1.5:1 SHEET 1 OF 1

CONTACT: MICROWAVE DEVICES - 1150 N. GRAHAM RD. (317) 736-8833

DIMENSIONS ARE IN INCHES UNLESS OTHERWISE SPECIFIED.

4

3

2

1