

SPECIFICATIONS

FREQUENCY RANGE: 2.0 TO 8.0 GHz
 INSERTION LOSS: 0.3 dB TYPICAL
 0.6 dB MAX.

ISOLATION: 20 dB

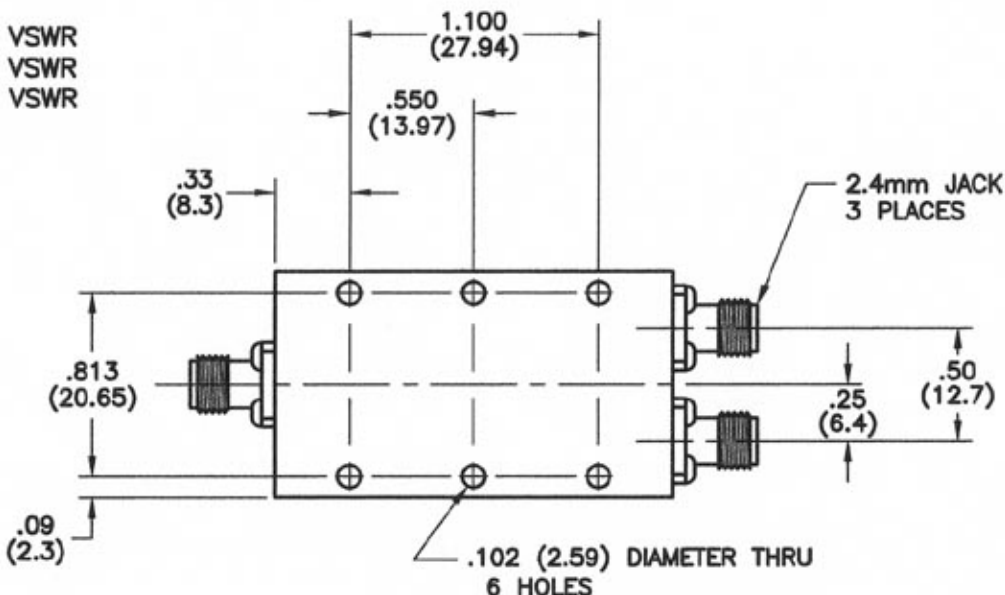
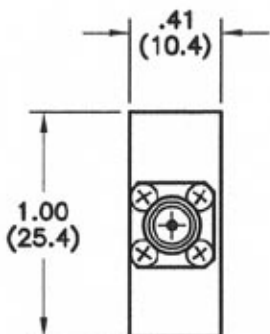
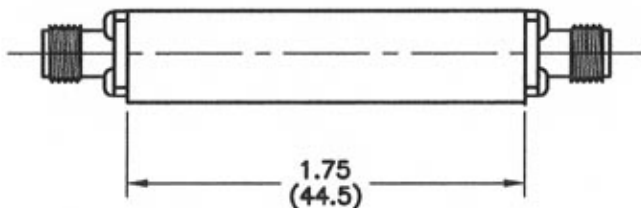
VSWR: 1.35:1 - INPUT
 1.30:1 - OUTPUT

AMPLITUDE BALANCE: ±0.4 dB MAX.

PHASE BALANCE: ±5° MAX.

POWER: 30 WATTS ⊕ 1.2:1 LOAD VSWR
 10 WATTS ⊕ 2.0:1 LOAD VSWR
 1 WATT ⊕ INFINITE LOAD VSWR

REVISIONS				
REV	ZONE	DESCRIPTION	DATE	BY ECO



DIMENSIONS: INCHES (MILLIMETERS)

TOLERANCES	
DEC.XX ± .03	FRAC ±
.XXX ± .010	ANG ±
MATERIAL	
FINISH	

THE INFORMATION CONTAINED IN THIS DOCUMENT IS THE PROPERTY OF MICROWAVE DEVICES, INC. AND IS PROPRIETARY. IT IS NOT TO BE COPIED OR USED FOR ANY PURPOSE OTHER THAN AS INSTRUCTED, IN WRITING, BY MICROWAVE DEVICES, INC.	
SIGNATURES	DATE
DR G.V.Cothren	2-22-07
CHK	
APPD	
APPD	

MICROWAVE DEVICES
RF and Microwave Components

OUTLINE, POWER DIVIDER, MODEL 2PD6.0-24

CAGE	SIZE	DRAWING NO.
60674	B	900369-2
DRAWING SCALE 2=1		SHEET 1 OF 1

CONTACT: MICROWAVE DEVICES - 1150 N. GRAHAM RD. FRANKLIN, IN 46131 (317) 736-8833

DIMENSIONS ARE IN INCHES UNLESS OTHERWISE SPECIFIED.