

# SPECIFICATIONS

FREQUENCY RANGE - DC TO 2.4 GHz

IMPEDANCE - 50 OHMS

VSWR (1.0 GHz) - 1.25:1 MAX.

(2.4 GHz) - 1.45:1 MAX.

INPUT POWER (AVG.) - 1000 WATTS

(PEAK) - 2000 WATTS

ATTEN. ACCURACY -  $\pm 0.50$ dB OR 3%, DC TO 1.0 GHz (GREATER OF)

$\pm 0.75$ dB OR 5%, 1.0 TO 2.4 GHz (GREATER OF)

AVAILABLE ATTENUATION - 3 dB TO 60 dB

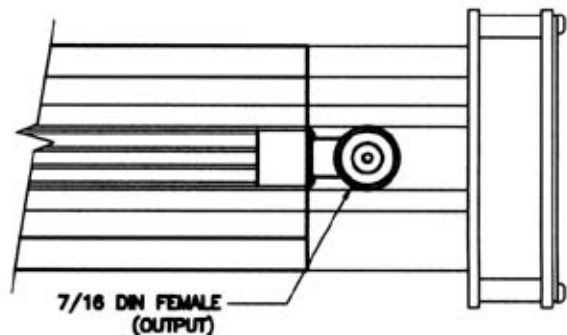
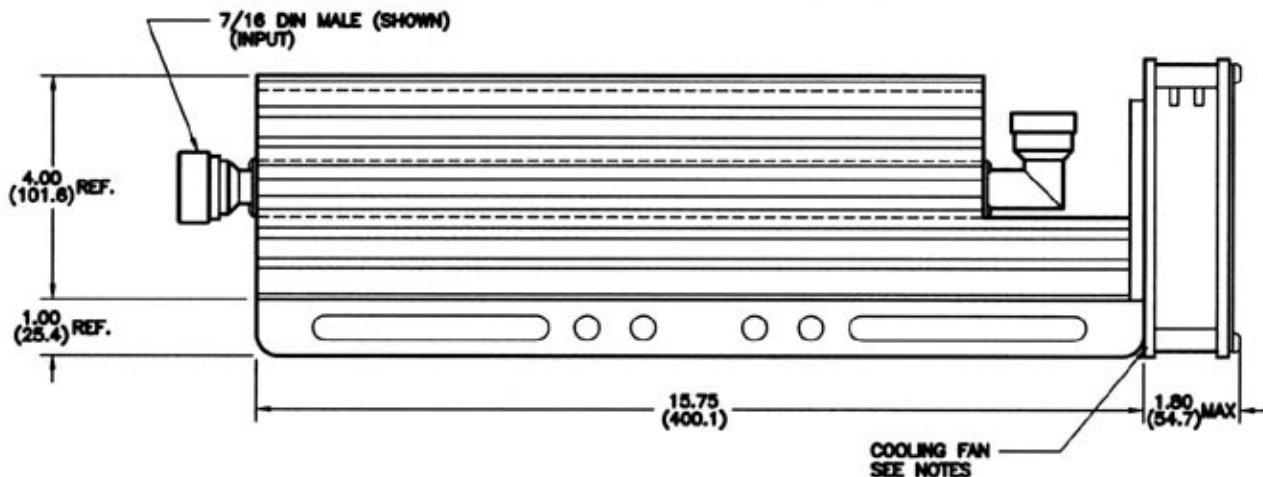
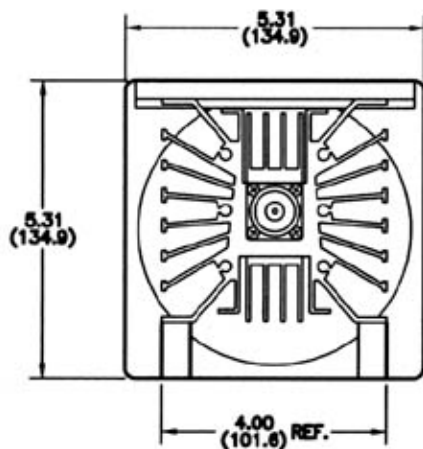
OPERATING TEMPERATURE -  $-55^{\circ}\text{C}$  TO  $+125^{\circ}\text{C}$

CONNECTOR - TYPE N M/F; 7/16 DIN M/F

COOLING: 159 C.F.M. FORCED AIR FAN COOLED

110 VAC - 60 Hz OR 220 VAC - 50 Hz - AS REQUIRED

REVISIONS			
REV. NO.	DESCRIPTION	DATE	BY EDO



DIMENSIONS: INCHES  
(MILLIMETERS)

TO: ENGINEER DESIGNED BY: J.C. MARSH CHECKED BY: J.C. MARSH DATE: 11/2/71 DRAWING NO.: 60674/D PART NO.: 900818 QUANTITY: 1 SCALE: 1:1 SHEET: 1 OF 1	THE INFORMATION CONTAINED HEREIN IS THE PROPERTY OF MICROWAVE DEVICES, INC. AND IS LOANED TO YOU FOR YOUR USE ONLY. IT IS NOT TO BE COPIED OR REPRODUCED IN ANY MANNER WITHOUT THE WRITTEN PERMISSION OF MICROWAVE DEVICES, INC.	<b>MICROWAVE DEVICES</b> ATTENUATOR, BI-DIRECTIONAL, 1000 W., MOD. MA-51000/XD7 CASE NO. 900818
--	--	--